



**East Pye Solar
Environmental Statement
Volume 3: Appendix 15.2 – Farm Reports**

Revision 1

March 2026

Planning Inspectorate Reference: EN0110014

Document Reference: APP/6.3.15.2

APFP Regulation 5(2)(a)

Contents

1	Introduction.....	1
2	Farm Reports	2

This page is intentionally blank

1 Introduction

- 1.1.1 This Appendix sets out the report of each of the farms within the Order Limits excluding the Cable Route Corridor.



2 Farm Reports

Business	1
Interview	27 th November 2025
Tenure	Owned
Farm size	220ha
Parcels	7L
Description	Farmland is mostly arable with some grassland areas. The land is used to grow a variety of combinable crops and for environmental schemes such as SFI and Countryside Stewardship (CSS). Produce is sold to a grain merchant and is then further sold on cross country. The farm is home to a small suckler herd of cattle no more than 20 head at any one time. The scheme includes some 9% of the land utilised by the business. To aid crop growth the land has been subject to fertiliser applications of both inorganic fertiliser and farmyard manure.
Photograph locations	
Photographs	<p>1</p> <p>2</p>



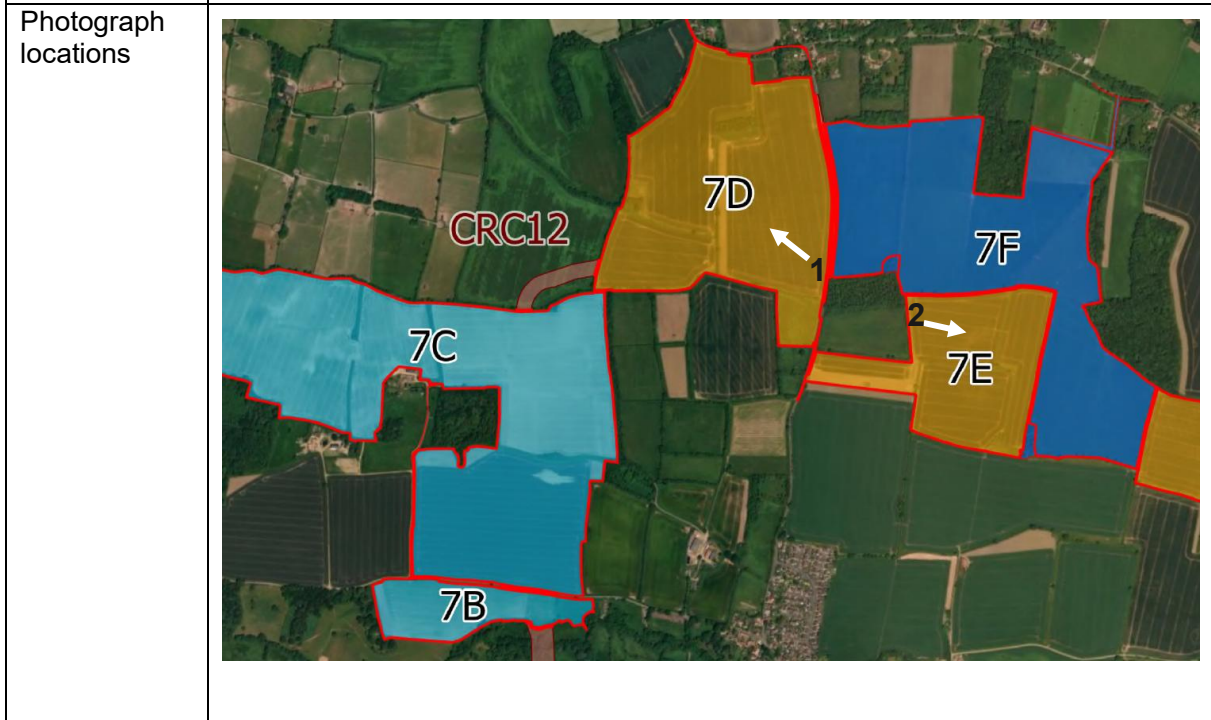
Business	2
Interview	4 th December 2025
Tenure	Owned
Farm size	810ha
Parcels	4A 4B 7A 7B 7C
Description	A large scale mostly arable enterprise with poultry unit. The farm grows a wide variety of crops for a mixture of human and animal consumption; the farm also grows game cover crops and break crops. Approximately 40ha of land is rented out to local farmers for grazing their livestock, further income streams have been created by the farm diversifying, introducing a game shoot, self-storage, rental properties and fishing lakes. The farm operates on a minimum tillage (min till) approach and makes use of inorganic fertiliser and poultry manure. The land benefits from under field drainage in places allowing for a longer working window for field operations.



	
Photographs	<p>1</p>  <p>2</p>  <p>3</p> 



Business	3
Interview	4 th December 2025
Tenure	Owned
Farm size	464ha
Parcels	5A 7D 7E 7G 7H 7J
Description	Farmland is mostly arable with some areas taken out of production for environmental schemes. The land is used to grow a variety of combinable crops and for environmental schemes such as SFI and Countryside Stewardship (CSS). Produce is sold to a grain merchant and is then further sold on cross country. The scheme makes use of some 35% of the land utilised by the business. To aid crop growth the land has been subject to fertiliser applications of both inorganic fertiliser and farmyard manure.



Photographs	1	
	2	

Business	4
Interview	3 rd December 2025
Tenure	Owned
Farm size	200ha
Parcels	7F
Description	Farmland is in grass for the grazing of the small sucker herd and herd of sheep. The farm holding has 100 suckler cows and up to 300 head of sheep at any one time. The scheme makes use of some 26% of the land utilised by the business. The ground is not subject to cultivations or fertiliser applications.

Photograph locations	
----------------------	--

Photographs	1	
	2	

Business	5
Interview	3 rd December 2025
Tenure	Owned and rented.
Farm size	570ha
Parcels	8A 8B 9
Description	Farmland is wholly arable with some areas taken out of production for environmental schemes. The land is used to grow a variety of combinable crops and for environmental schemes such as SFI and Countryside Stewardship (CSS). Produce is sold to grain merchants and local mills and is then further sold on cross country. The scheme makes use of some 18% of the land utilised by the business. To aid crop growth the land has been subject to fertiliser applications of both inorganic fertiliser and farmyard manure as such the soil organic matter levels are between 3.5 – 5% across the farm. The business has a small family shoot operating from the grounds.

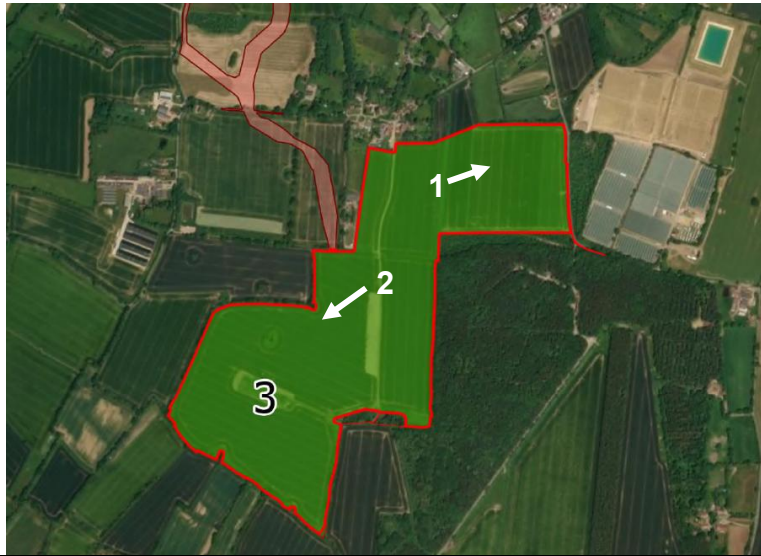
Photograph locations	
----------------------	--

Photographs	1	
	2	

Business	6
Interview	3 rd December 2025
Tenure	Owned and Farm Business Tenancy
Farm size	400ha
Parcels	3 5B 6

Description	<p>Farmland is mostly arable with some areas in grass. The land is used to grow a variety of combinable crops, forage and for environmental schemes such as SFI. The farm rents out approximately 10ha for grazing as well as operating a livery yard. Combinable crops are sold to a grain merchant and is then further sold on cross country whilst forage is sold off to an AD plant. The scheme makes use of some 35% of the land utilised by the business. To aid crop growth the land has been subject to fertiliser applications of both inorganic fertiliser and farmyard manure as such the soil organic matter levels are approximately 2% across the farm.</p>
-------------	---

Photograph
locations

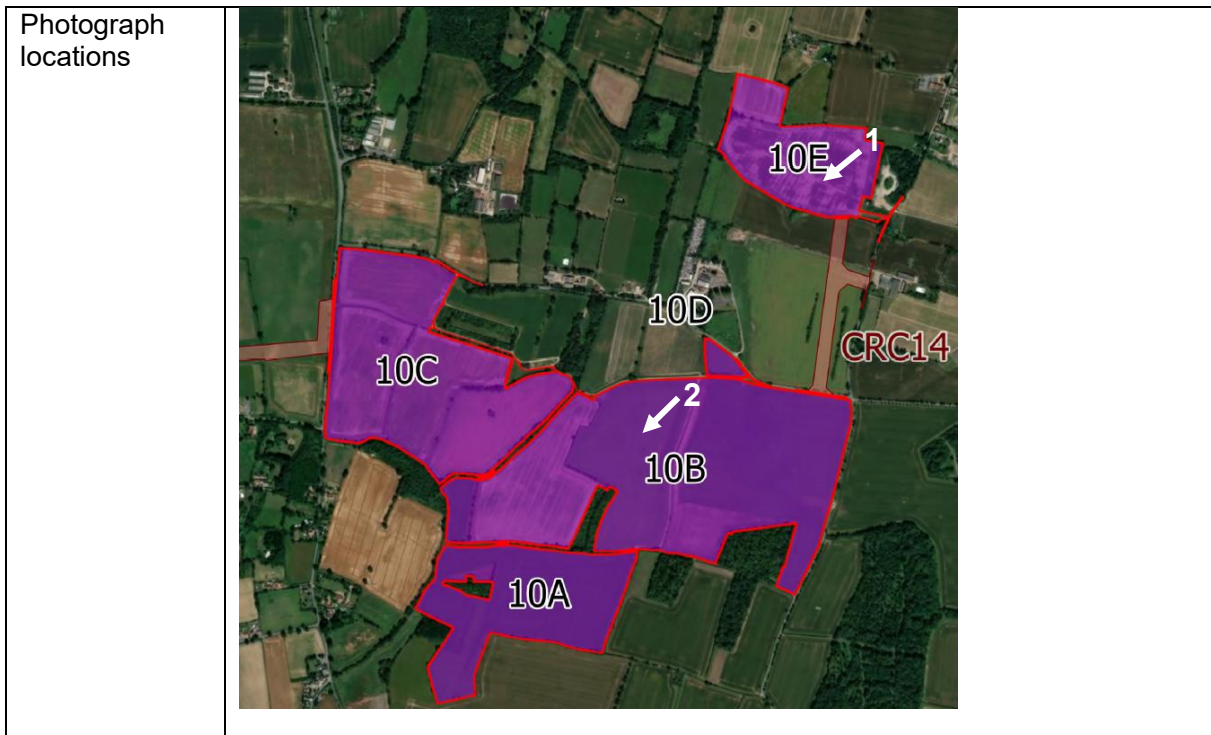


Photographs	1	
	2	
	3	
	4	

Business	7
Interview	4 th December 2025
Tenure	Owned
Farm size	231ha
Parcels	71 7K
Description	Farmland is mostly arable with some areas taken out of production for environmental schemes. The land is used to grow a variety of combinable crops and for environmental schemes such as SFI and Countryside Stewardship (CSS). The farming is completed by contractors. Produce is sold to a grain merchant and is then further sold on cross country. The scheme makes use of some 15% of the land utilised by the business. To aid crop growth the land has been subject to fertiliser applications of both inorganic fertiliser and farmyard manure.

<p>Photograph locations</p>	
<p>Photographs</p>	<p>1</p> <p>2</p>

<p>Business</p>	<p>8</p>
<p>Interview</p>	<p>21st January 2026</p>
<p>Tenure</p>	<p>Owned</p>
<p>Farm size</p>	<p>570ha</p>
<p>Parcels</p>	<p>10A 10B 10C 10D 10E</p>
<p>Description</p>	<p>Farmland is mostly arable and grassland with some areas taken out of production for environmental schemes. The land is used to grow a variety of combinable crops and for environmental schemes such as SFI and Countryside Stewardship (CSS). The cultivations drilling and fertiliser applications are completed by the farm while the harvesting is completed by contractors. Produce is sold to merchants and local farms; rye is sold to an AD plant. The scheme makes use of some 26% of the land utilised by the business. To aid crop growth the land has been subject to fertiliser applications of both inorganic fertiliser and farmyard manure.</p>



Business	9
Interview	-
Tenure	Farmed by contractors on an at-cost basis.
Farm size	-
Parcels	1A 1B 2A 2B 2C BESS
Description	Farmland is mostly arable. The land is used to grow a variety of combinable and forage crops. The land is entirely farmed by contractors.

<p>Photograph locations</p>	
<p>Photographs</p>	<p>1</p> <p>2</p> <p>3</p>

